



# Park Village events



1 Park Village East • London NW1 7PX • [events@parkvillage.co.uk](mailto:events@parkvillage.co.uk) • [www.parkvillage.co.uk](http://www.parkvillage.co.uk) • +44 (0)207 387 8077

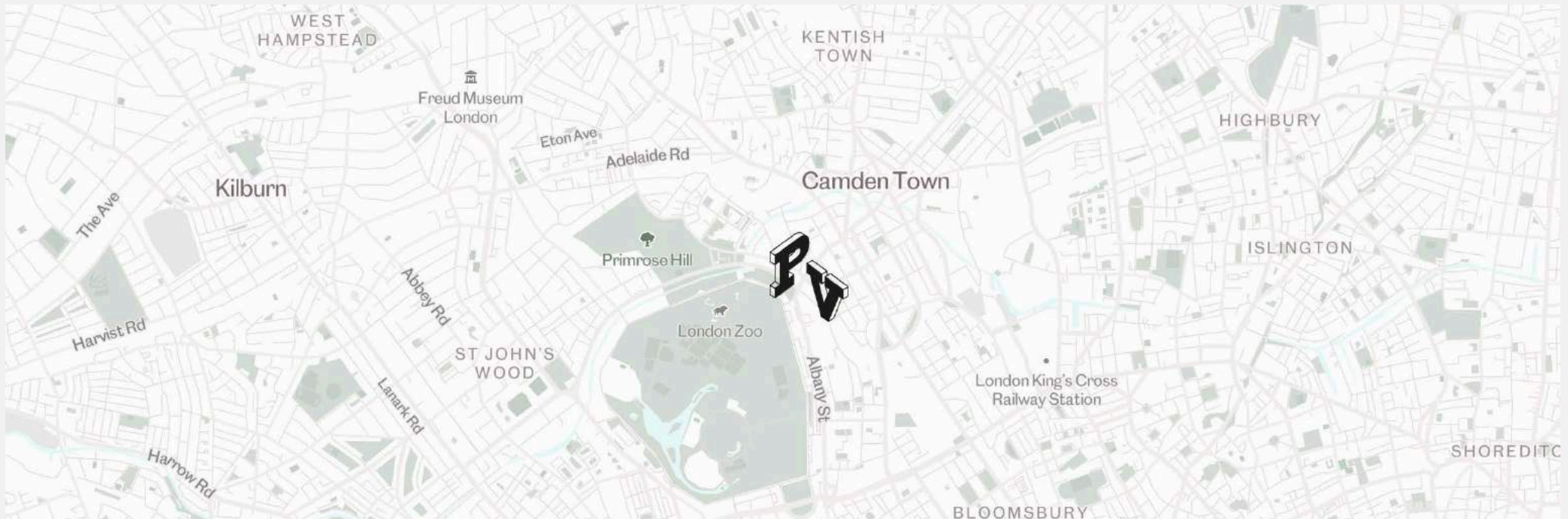






Situated metres from the Gloucester Gate entrance to Regent's Park, the studios offer 10,000 sq ft of flexible space over three distinctive areas to provide a stunning setting for a wide range of events — from product launches, conferences and brand events to film screenings and private parties, complete with break-out rooms and state-of-the-art AV and production.

Built in 1892 as an indoor riding academy and protected by English Heritage, the studios' eclectic history includes housing elephants, giraffes and a brown bear named 'Spitfire' when nearby London Zoo was bombed in WW2. The studios have continued to attract the brightest stars of film, fashion, art and music, from the Rolling Stones in 1969 right up to the present day.









# THE ARENA (STUDIO 1)

Take a Virtual Tour

Floor Plan

- » 2,700 sq ft double-height converted Victorian riding arena
- » cast iron spiral staircase and viewing gallery
- » J-shaped infinity cove for projections
- » full blackout and daylight options
- » 3-phase power & 1GB Ultra-fast WiFi
- » in-built speaker system/amplifiers/audio processor
- » direct to garden and drive-in access
- » capacity | standing 250 | theatre 200 | banquet 175

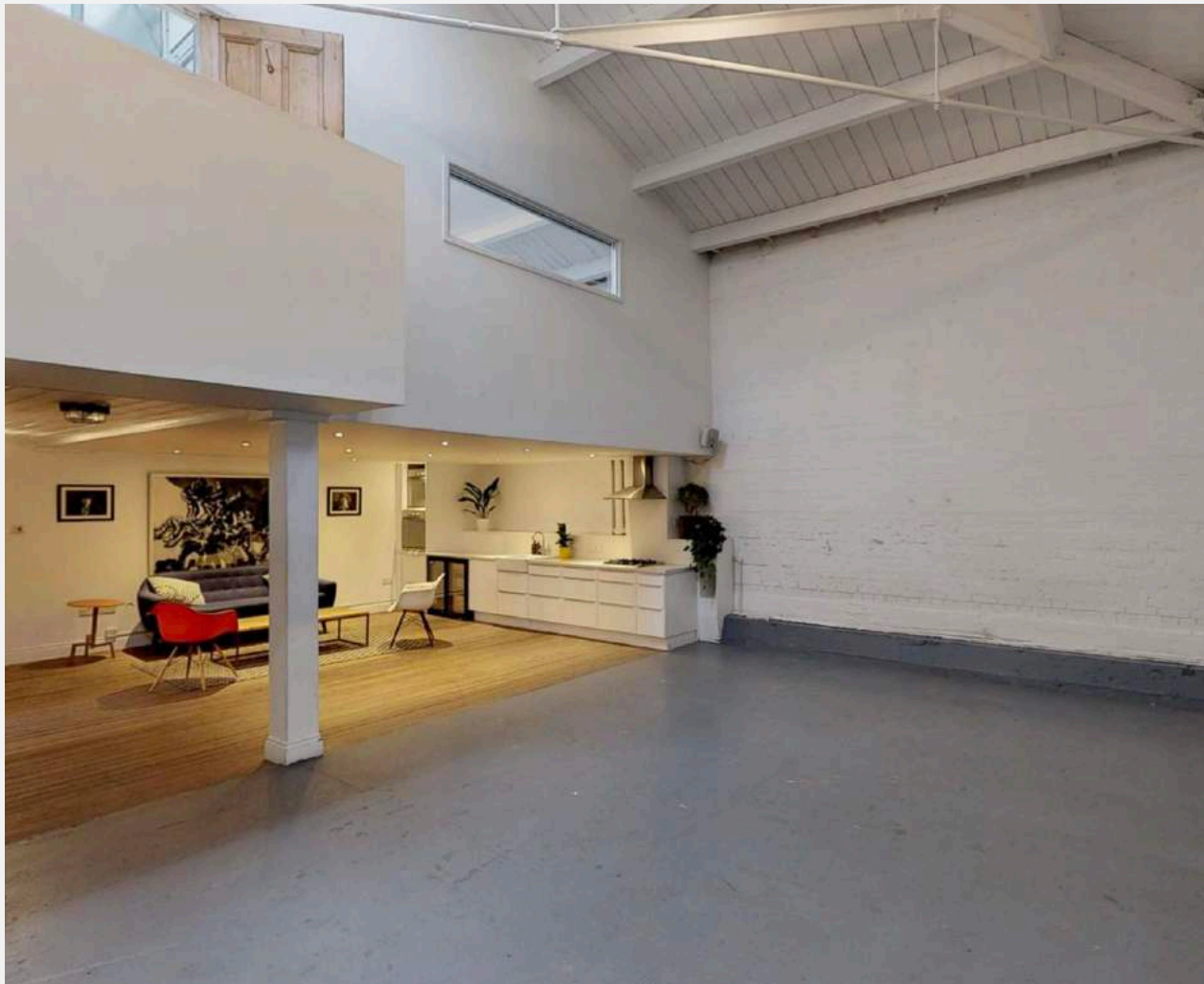


# THE STALLS (STUDIO 2)

Take a Virtual Tour

Floor Plan

- » 1,200 sq ft contemporary flexible space with large mezzanine area
- » open kitchen
- » full blackout and daylight options
- » 3-phase power & 1GB Ultra-fast WiFi
- » audio system
- » styling suite/green room
- » direct to garden and drive-in access
- » capacity | standing 100 | theatre 80 | banquet 80





# THE STABLES (STUDIO 3)

Take a Virtual Tour

Floor Plan

- » 1,300 sq ft space with wooden beams & vintage tiles
- » full blackout and daylight options
- » industrial staircase and entrance lobby for branding
- » audio and projection system
- » 3-phase power & 1GB Ultra-fast WiFi
- » capacity | standing 100 | theatre 100 | banquet 100





## THE BIG YAWN

Shot in The Arena at Park Village (1969)





# clients.



ELTON JOHN  
AIDS FOUNDATION



BURBERRY  
LONDON

Dior

BBC

STUDIOS

Artlogic



LACOSTE

Oath:  
A Verizon company

FRIEZE

SUNTORY WHISKY

Dom Pérignon

SONY



airbnb



SWAROVSKI



Dom Pérignon

# DOM PERIGNON & LENNY KRAVITZ

Assemblage Exhibition  
and opening night party



Park Village



SONY

# SONY PlayStation Dreams PS4 game launch

Park Village



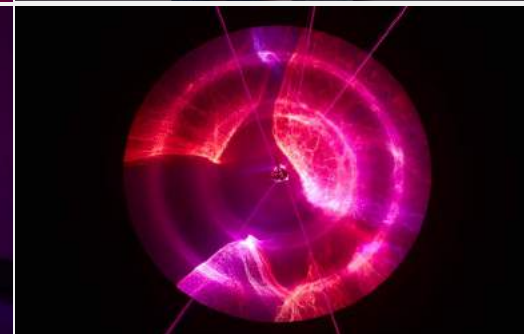


**KARSTEN SCHUBERT**  
**LONDON • ART LOGIC**  
'Dialectical Materialism'  
Exhibition for  
Frieze Week



**CHRIS LEVINE •  
ELTON JOHN AIDS  
FOUNDATION**

Preview party for  
Inner (Deep) Space  
exhibition for Frieze Week





# NEW YORK JAZZ AGE PARTY

With video mapping  
of the infinity cove







## SUPPLIERS

Park Village offers straight dry-hire or full production packages including creative direction, set design, AV and catering.

Our trusted catering partners, Cater London, work with chefs from London's top restaurants and source from the finest suppliers to produce food and drink of consistently outstanding quality.



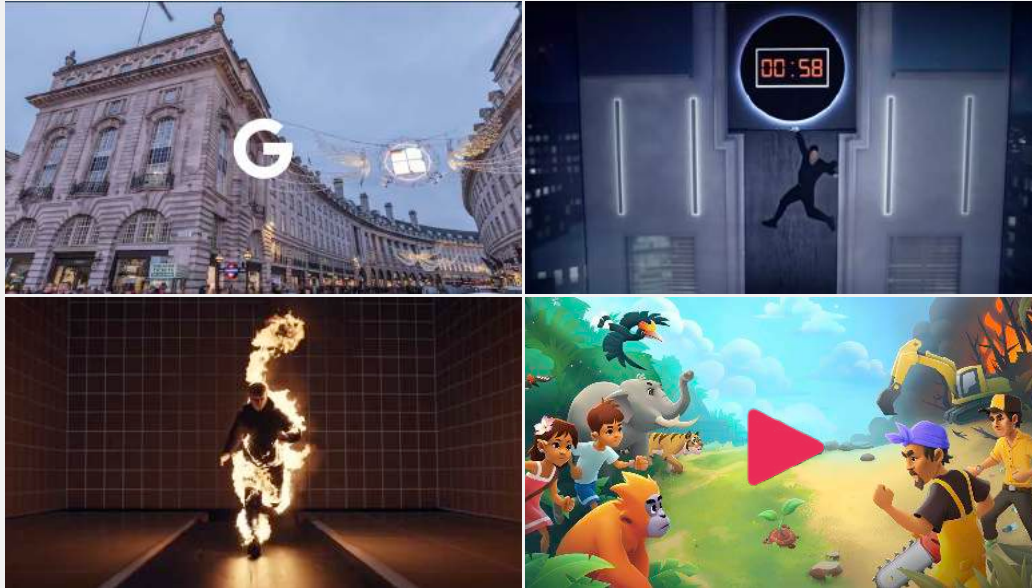


## ROOM 6

Room 6 is an experiential studio sitting at the heart of Park Village, developed to cut through the noise by applying a future facing, creative-tech led mindset.

Working alongside our collective of designers, specialist collaborators and creative technologists, we specialise in producing experiential events and hybrid moving image content.

Working with agencies, brands and artists we create content tailored to any platform. Whether live streaming a virtual event, developing a VR experience or creating format-based digital content, we're led by design and technology to foster innovation,





## CLIMATE & CULTURE

Park Village is committed to following, promoting and improving good sustainability practices across all of our activities to reduce and offset our carbon footprint and become a sustainable company.

We are committed to making our industry a more representative, diverse and inclusive environment through combatting discrimination and encouraging equality and diversity, giving opportunities to underrepresented and disadvantaged groups and offering our studios and our time to organisations and charities striving for change.



**CAP**

[www.carbonawareproductions.com](http://www.carbonawareproductions.com)



**AD  
NET  
ZERO**

ALL FOR NONE  
PROUD SUPPORTER

CREATIVE  
INDUSTRIES  
PACT FOR  
SUSTAINABLE  
ACTION

*Signatory*

CREATIVE  
MENTOR  
NETWORK



ONWARDS  
& UPWARDS